

MONTHLY MEMBERSHIP PROGRESS REPORT

District 12 S

Results as of: 3/31/2026

GMT:

LOCATION TENNESSEE

GMT CA

Clubs			
RESULTS FOR 2025-2026			
QUARTER	NEW CLUB GOAL	NEW CLUBS	DROPPED CLUBS
JULY/AUG/SEPT	0	0	0
OCT/NOV/DEC	1	0	0
JAN/FEB/MAR	0	0	0
APR/MAY/JUNE	0	0	0

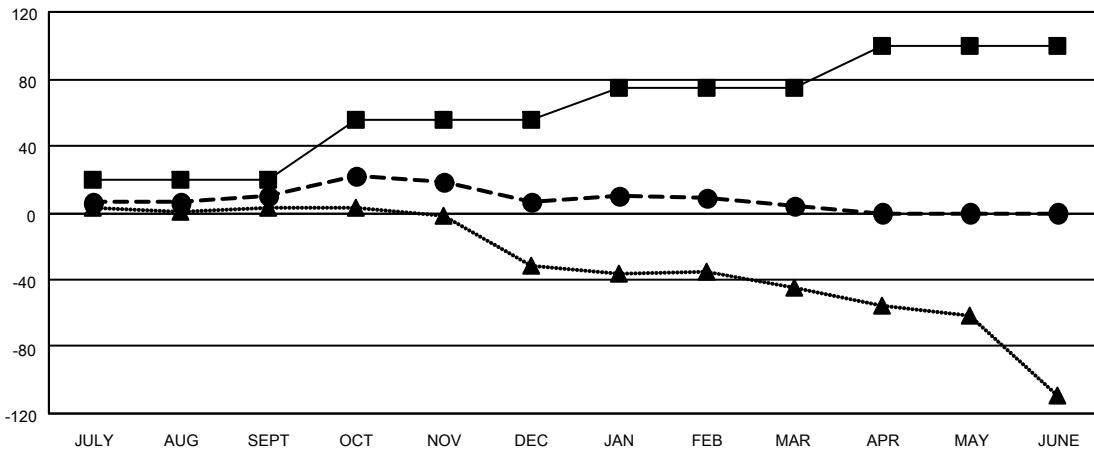
Members			
RESULTS FOR 2025-2026			
QUARTER	MEMBER GROWTH NET GOAL	MEMBER GROWTH ACTUAL	DROPPED MEMBERS ACTUAL (including transfers)
JULY/AUG/SEPT	20	22	8
OCT/NOV/DEC	35	19	21
JAN/FEB/MAR	20	19	18
APR/MAY/JUNE	25	0	0

GOALS AND ACTUAL NEW CLUBS CUMULATIVE



- - CURRENT YEAR GOALS FOR NEW CLUBS
- - CURRENT YEAR ACTUAL NEW CLUBS
- ▲ - LAST YEAR ACTUAL NEW CLUBS

GOALS AND ACTUAL MEMBERS CUMULATIVE



- - MEMBER GROWTH NET GOAL
- - MEMBER GROWTH ACTUAL
- ▲ - LAST YEAR MEMBERSHIP ACTUAL

DROPPED CLUBS: 0	15 CLUBS OF 37 ADDED 1 OR MORE NEW MEMBERS	GENDER DISTRIBUTION
		MALE 422 (55.45%)
		FEMALE 339 (44.55%)
DROPPED MEMBERS	CLICK HERE FOR CUMULATIVE MEMBERSHIP DATA	TOTAL FAMILY UNIT MEMBERS 158
DECEASED 8		FAMILY MEMBERS PAYING HALF DUES 81
CLUB CANCELLED 0		
OTHER 39		
TOTAL 47		